

IPSOS MORI POLITICAL MONITOR

JUNE 2020

Ipsos MORI



VOTING INTENTION

POLLING
STATION

WAY IN

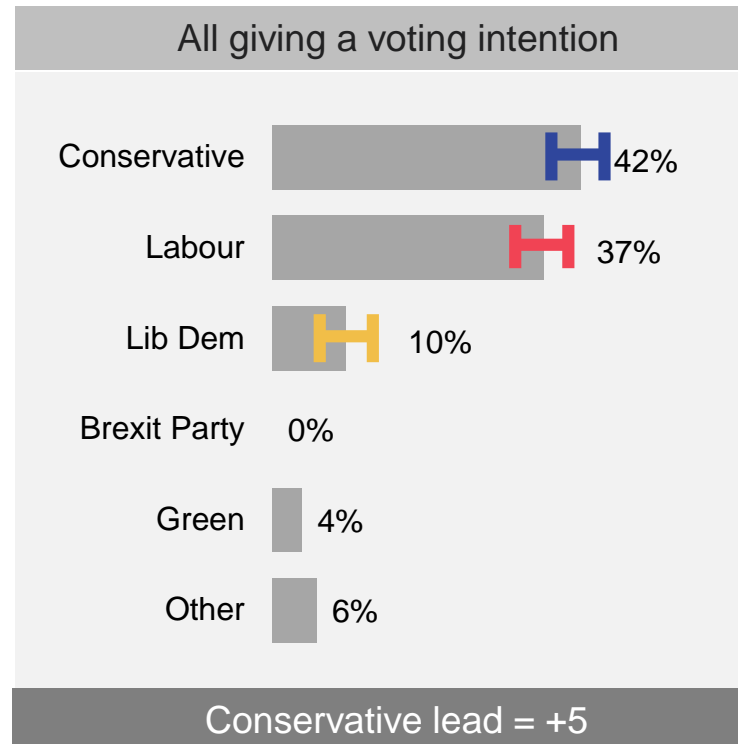
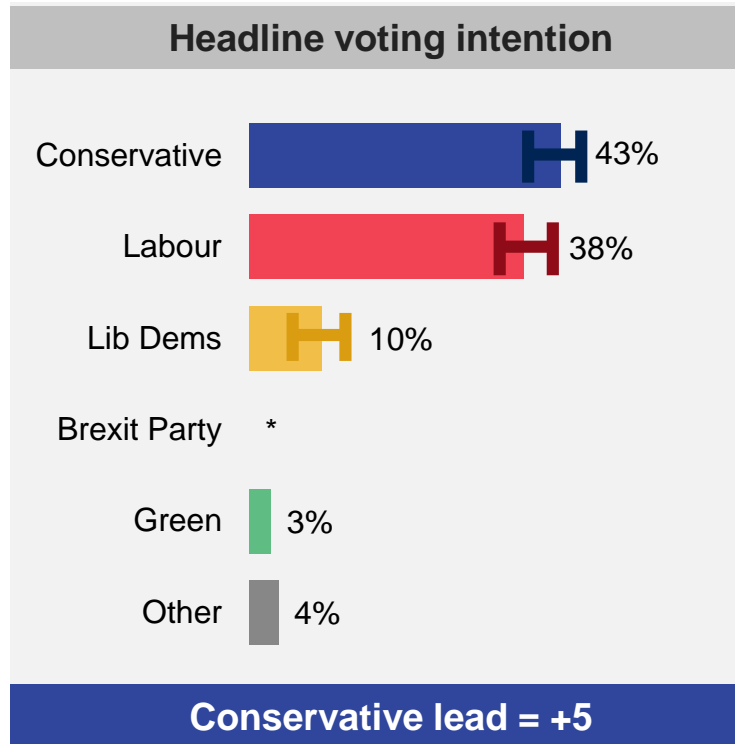
WAY IN

Ipsos MORI



Voting Intention: June 2020

How do you intend to vote in the General Election? Will you vote...?

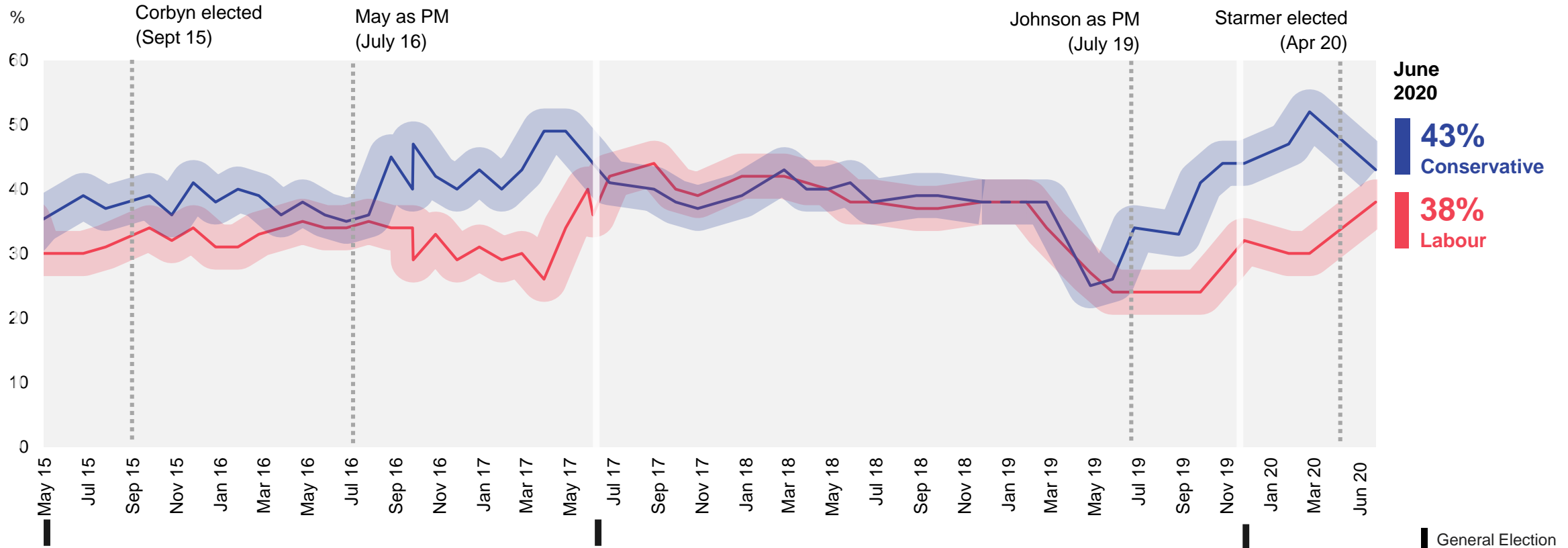


Base: 1,059 British adults 18+, 5 – 10 June 2020; Headline Voting Intention: all 9/10 certain to vote, always/usually/it depends vote in General Elections = 786. Margin of error is displayed at +/- 4% All polls are subject to a wide range of potential sources of error. On the basis of the historical record of the polls at recent general elections, there is a 9 in 10 chance that the true value of a party's support lies within 4 points of the estimates provided by this poll, and a 2 in 3 chance that they lie within 2 points. This is especially important to keep in mind when calculating party lead figures.

Source: Ipsos MORI Political Monitor

Headline voting intention: Since the 2015 General Election

How would you vote if there were an election tomorrow?

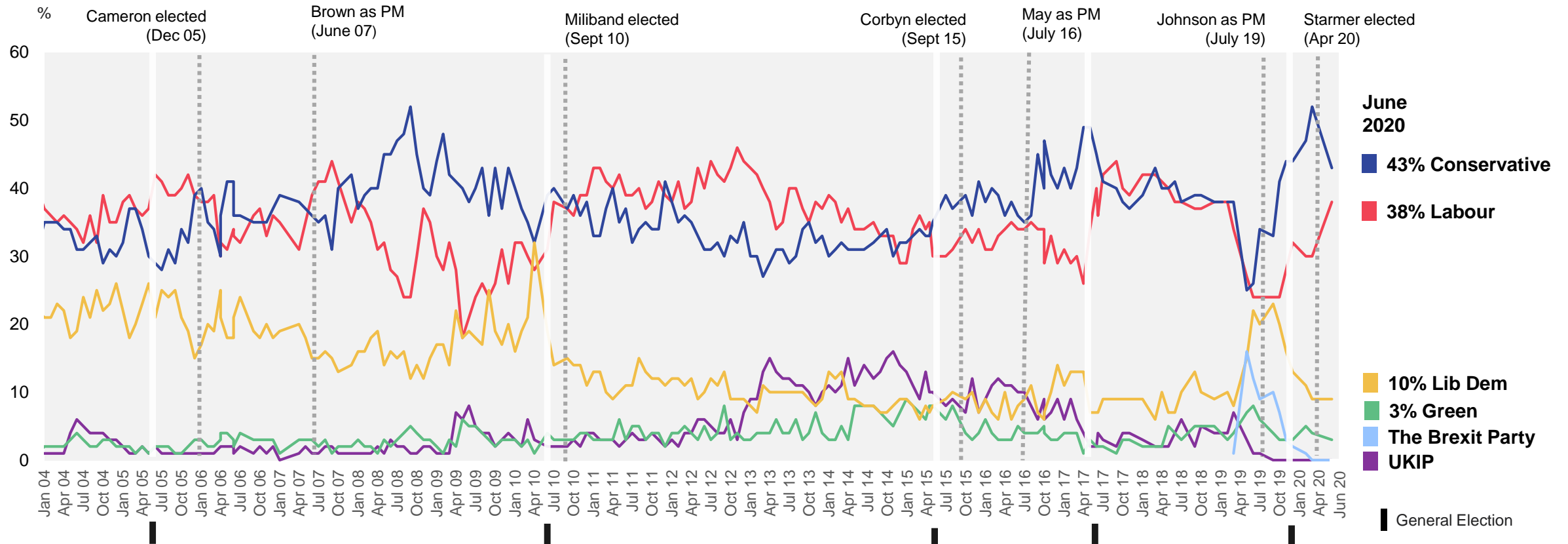


Base: c. 800 British adults; Prior to July 2015 the turnout filter is "All certain to vote"; From July 2015 turnout filter is "all 9/10 certain to vote and always/usually/it depends vote in General Elections. Note small change in methodology in approach to prompting Brexit Party in July 2019

Source: Ipsos MORI Political Monitor

Headline voting intention: January '04 – June '20

How would you vote if there were an election tomorrow?



Base: c. 800 British adults; Prior to July 2015 the turnout filter is "All certain to vote"; From July 2015 turnout filter is "all 9/10 certain to vote and always/usually/it depends vote in General Elections. Note small change in methodology in approach to prompting Brexit Party in July 2019

Source: Ipsos MORI Political Monitor



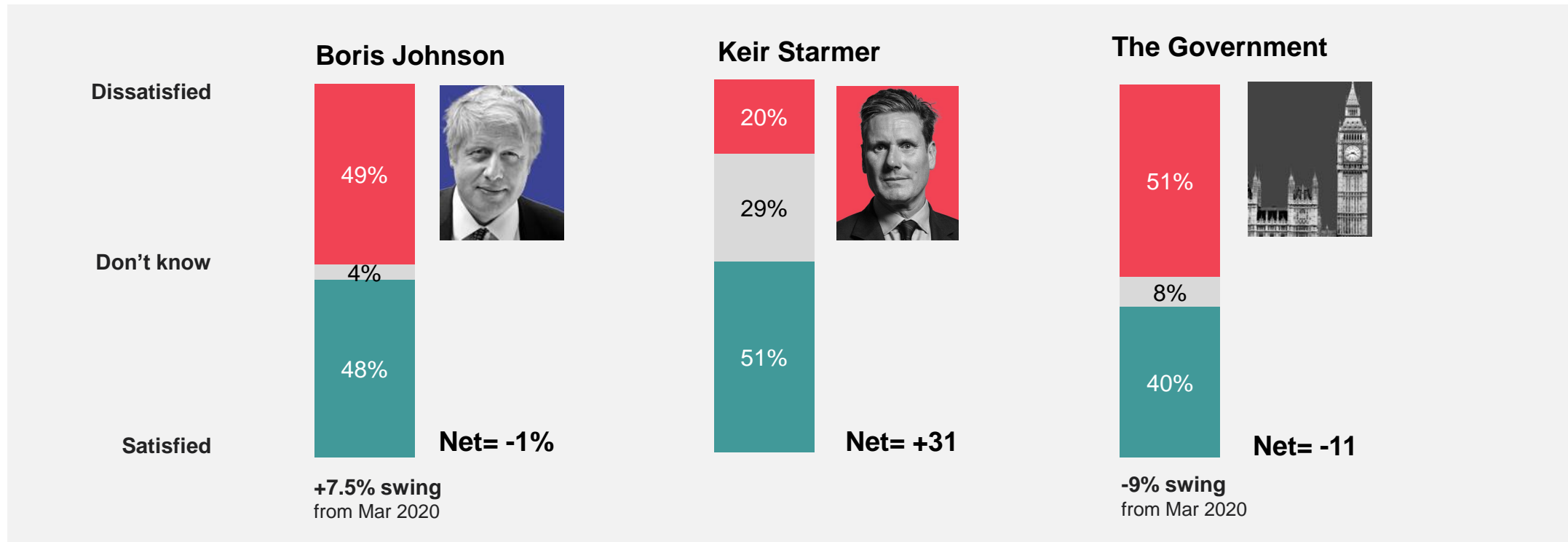
SATISFACTION
WITH GOVERNMENT
AND PARTY LEADERS

Ipsos MORI



Satisfaction with leaders and the Government: June 2020

Are you satisfied or dissatisfied with the way.... is running the country / doing his/her job. as Prime Minister /Leader of the Labour Party?



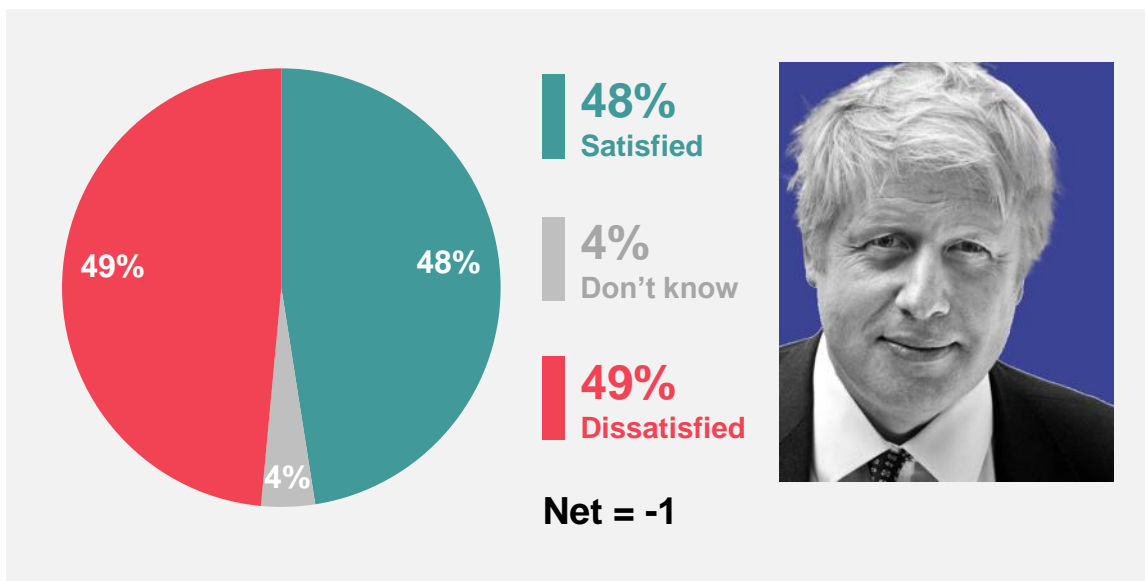
Base: 1,059 British adults 18+, 5 - 10 June 2020. Swing is calculated as the average of change in % "satisfied" and % "dissatisfied"

Source: Ipsos MORI Political Monitor

Boris Johnson: Satisfaction

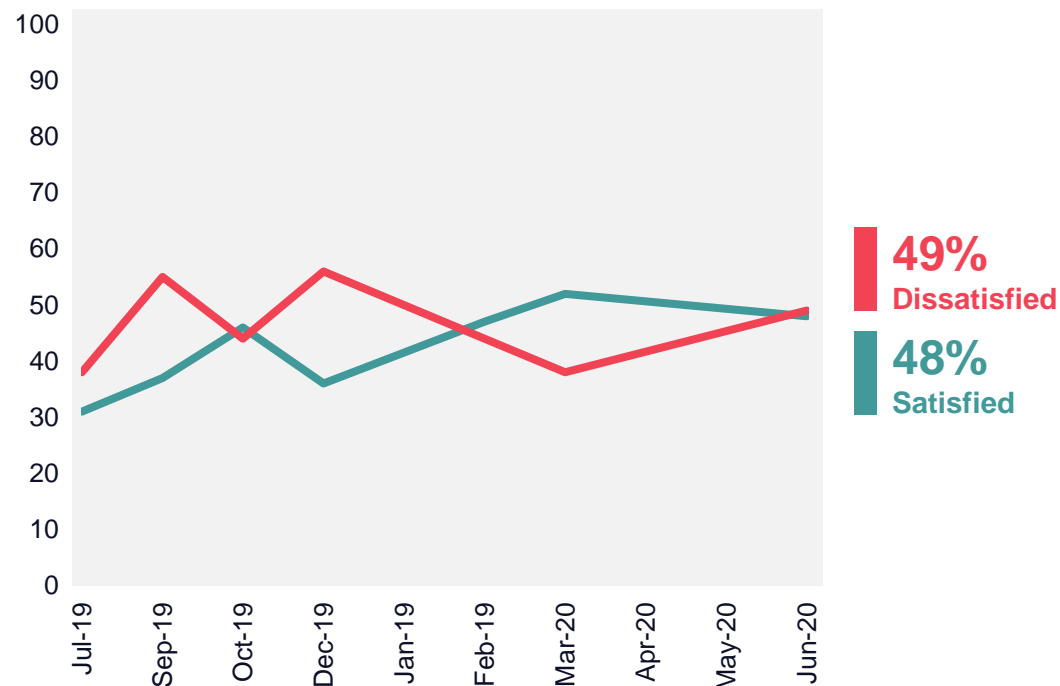
Are you satisfied or dissatisfied with the way Boris Johnson is doing his job as prime minister?

June 2020



Base: 1,059 British adults 18+, 5 - 10 June 2020

July 2019 – June 2020

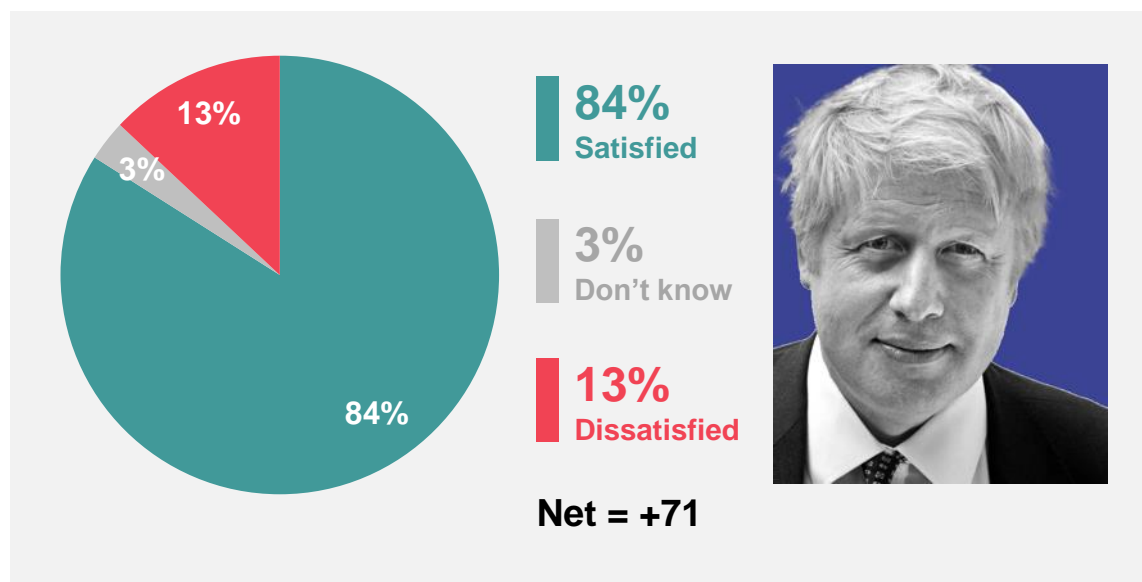


Source: Ipsos MORI Political Monitor

Boris Johnson: Satisfaction among Conservative supporters

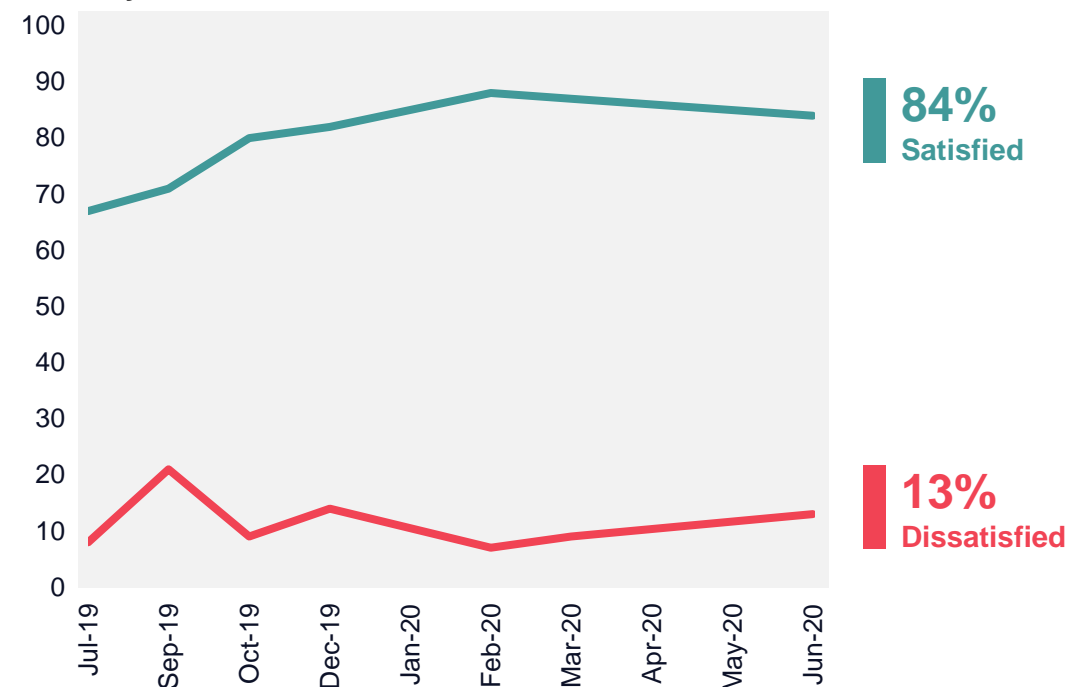
Are you satisfied or dissatisfied with the way Boris Johnson is doing his job as prime minister?

June 2020



Base: 354 Conservative party supporters 18+, 5 - 10 June 2020

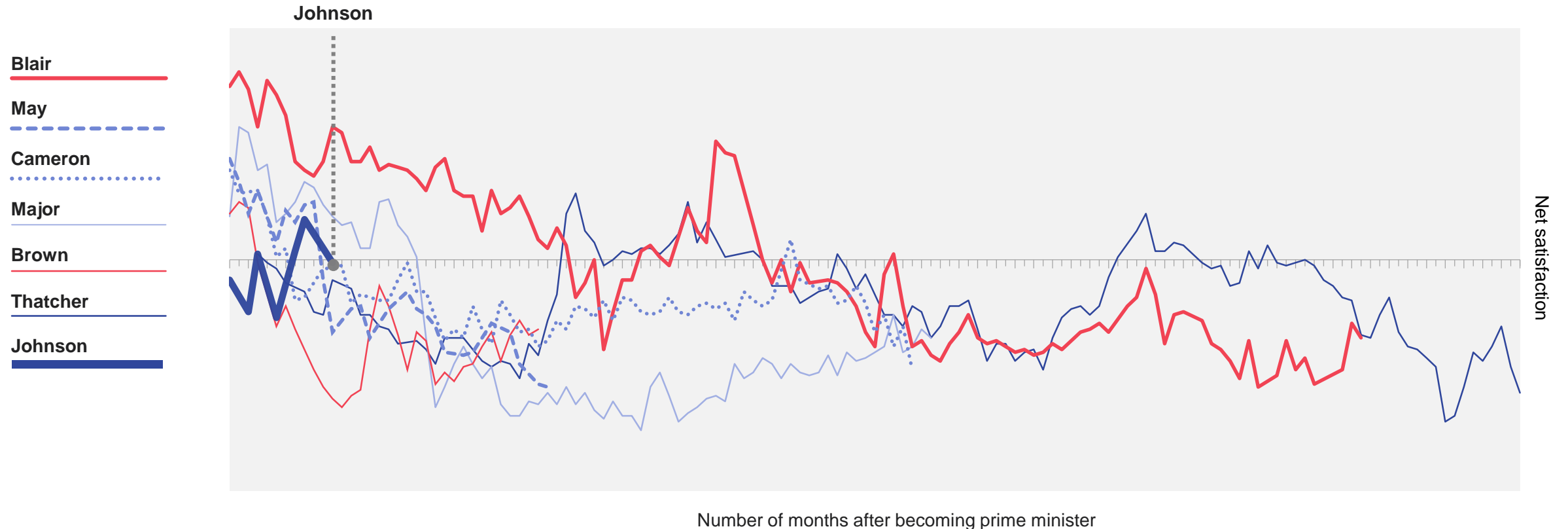
July 2019 – June 2020



Source: Ipsos MORI Political Monitor

Net satisfaction with Prime Ministers (1979-2020)

How satisfied or dissatisfied are you with the way ... is doing his/her job as prime minister?



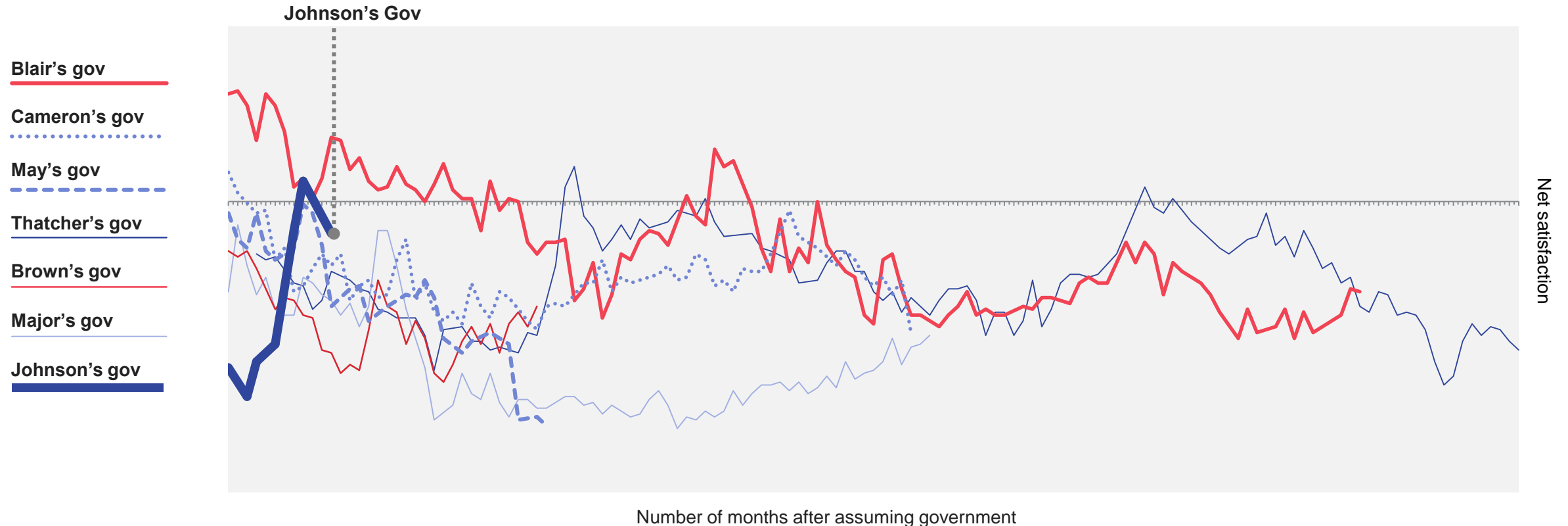
Note: Data collected prior to February 2008 was collected via face-to-face methodology; data collected from February 2008 was via telephone

Base: c.1,000 British adults each month

Source: Ipsos MORI Political Monitor

Net satisfaction with the Government (1979 – 2020)

How satisfied or dissatisfied are you with the way the government is running the country?



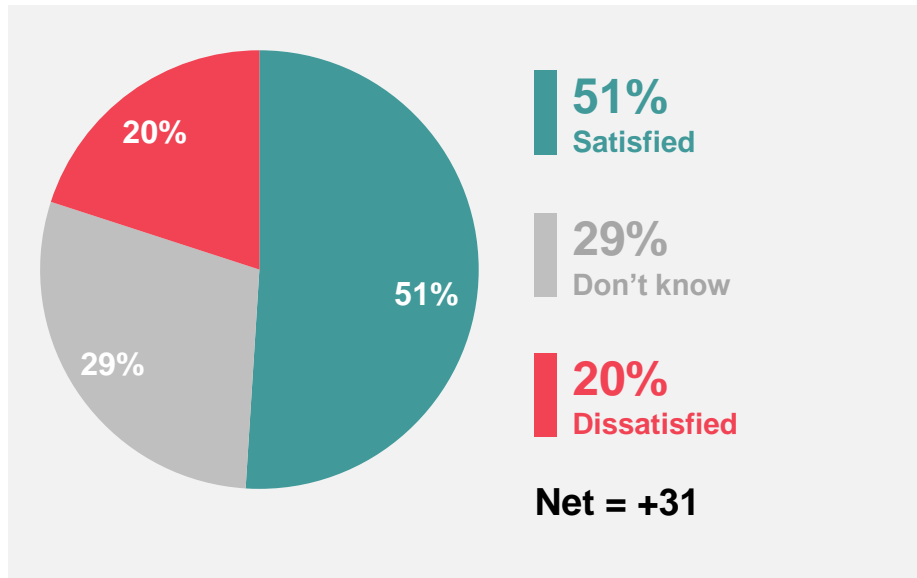
Note: Data collected prior to February 2008 was collected via face-to-face methodology; data collected from February 2008 was via telephone
Base: c.1,000 British adults each month

Source: Ipsos MORI Political Monitor

Keir Starmer: Satisfaction

Are you satisfied or dissatisfied with the way Keir Starmer is doing his job as leader of the Labour Party?

June 2020

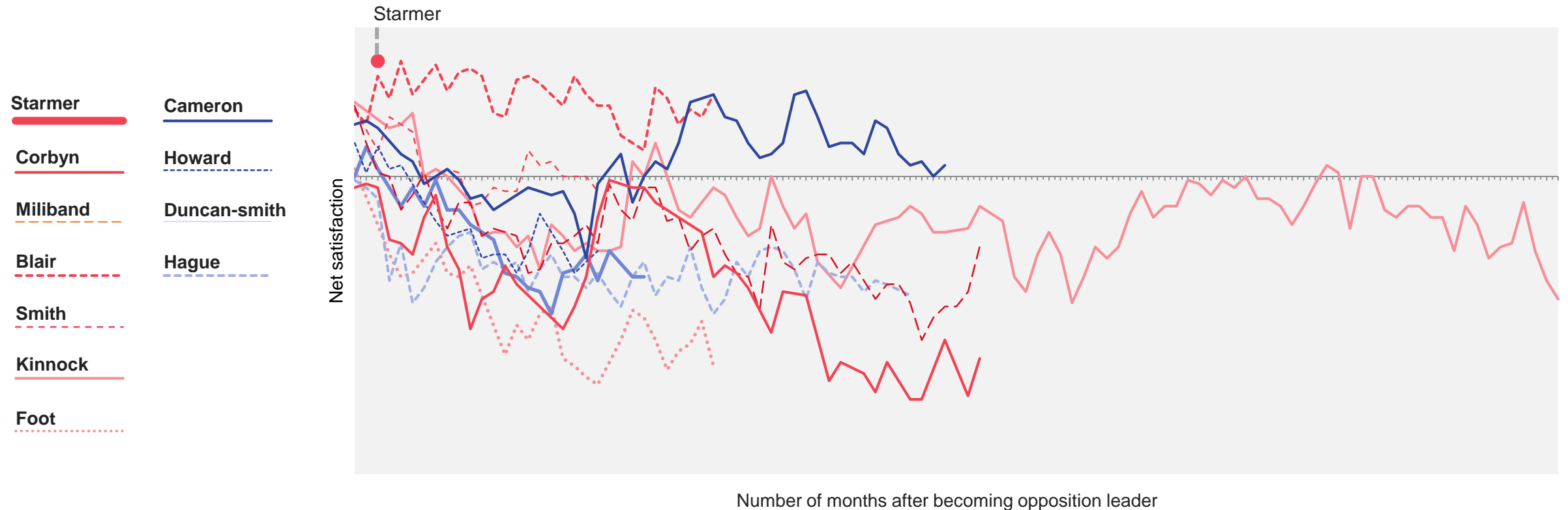


Base: 1,059 British adults 18+, 5 - 10 June 2020

Source: Ipsos MORI Political Monitor

Net satisfaction with Opposition Leaders (1980 – 2020)

How satisfied or dissatisfied are you with the way ... is doing his job as leader of the ... Party?



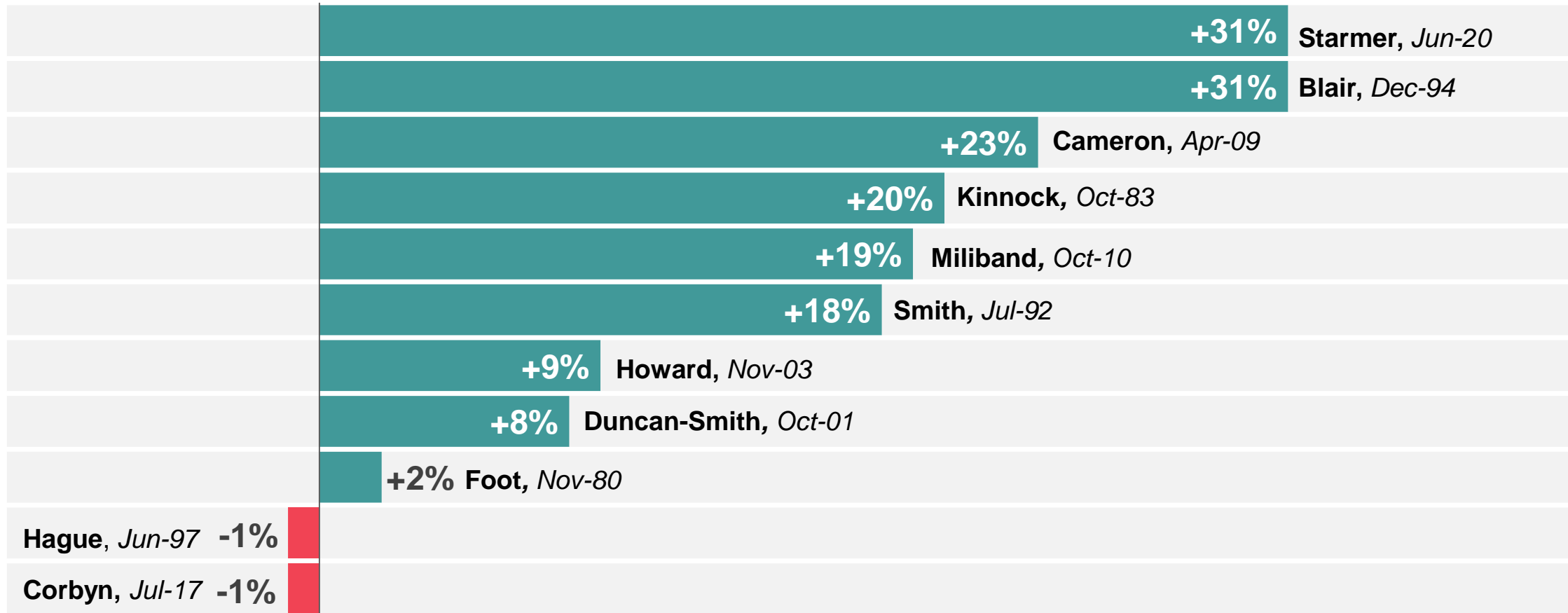
Note: Data collected prior to February 2008 was collected via face-to-face methodology; data collected from February 2008 was via telephone
Base: c.1,000 British adults each month

Source: Ipsos MORI Political Monitor

Satisfaction with Leader of the Opposition (1979-2020)

How satisfied or dissatisfied are you with the way ... is doing his job as leader of the ... Party?

% Highest net scores achieved by each Leader of the Opposition

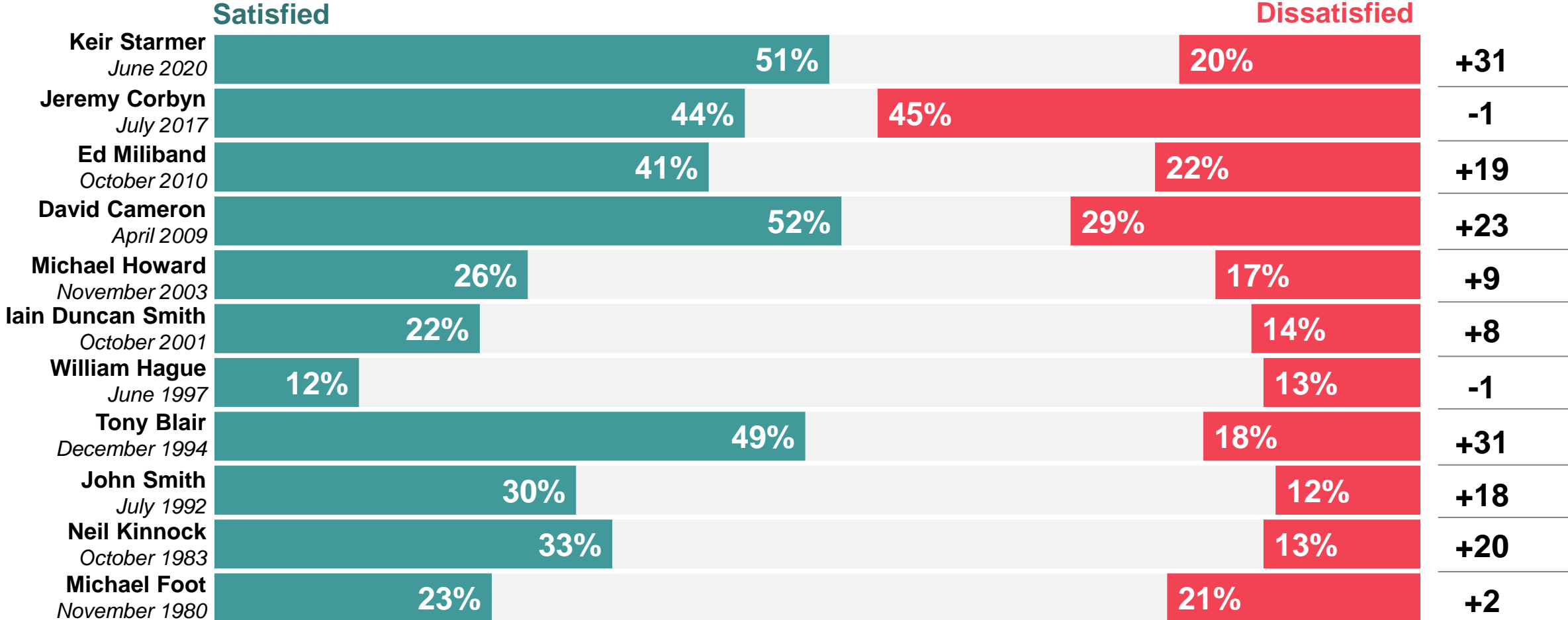


Note: Data collected prior to February 2008 was collected via face-to-face methodology; data collected from February 2008 was via telephone

Base: c.1,000 British adults each month

Satisfaction with Leader of the Opposition: Highest net scores achieved by each leader (1979-2020)

How satisfied or dissatisfied are you with the way ... is doing his job as leader of the ... Party?

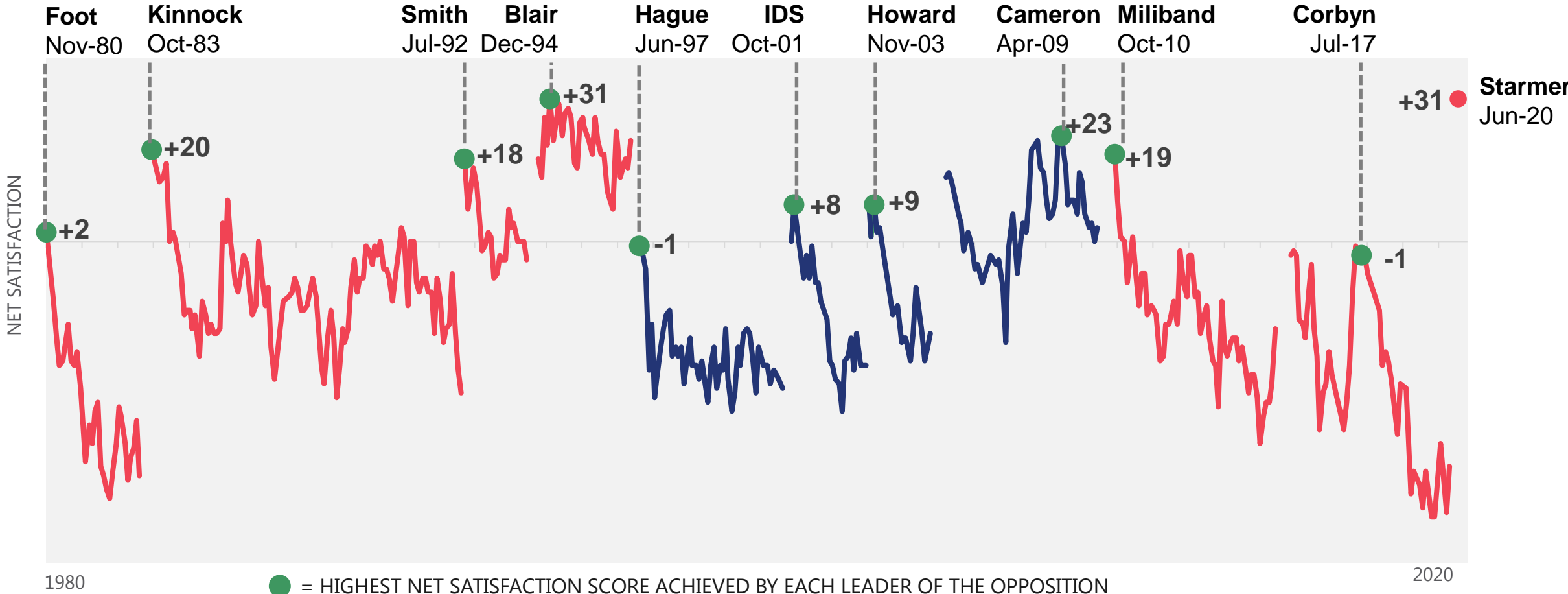


Note: Data collected prior to February 2008 was collected via face-to-face methodology; data collected from February 2008 was via telephone

Base: c.1,000 British adults each month

Satisfaction with Leader of the Opposition: Highest net scores achieved by each leader (1979-2020)

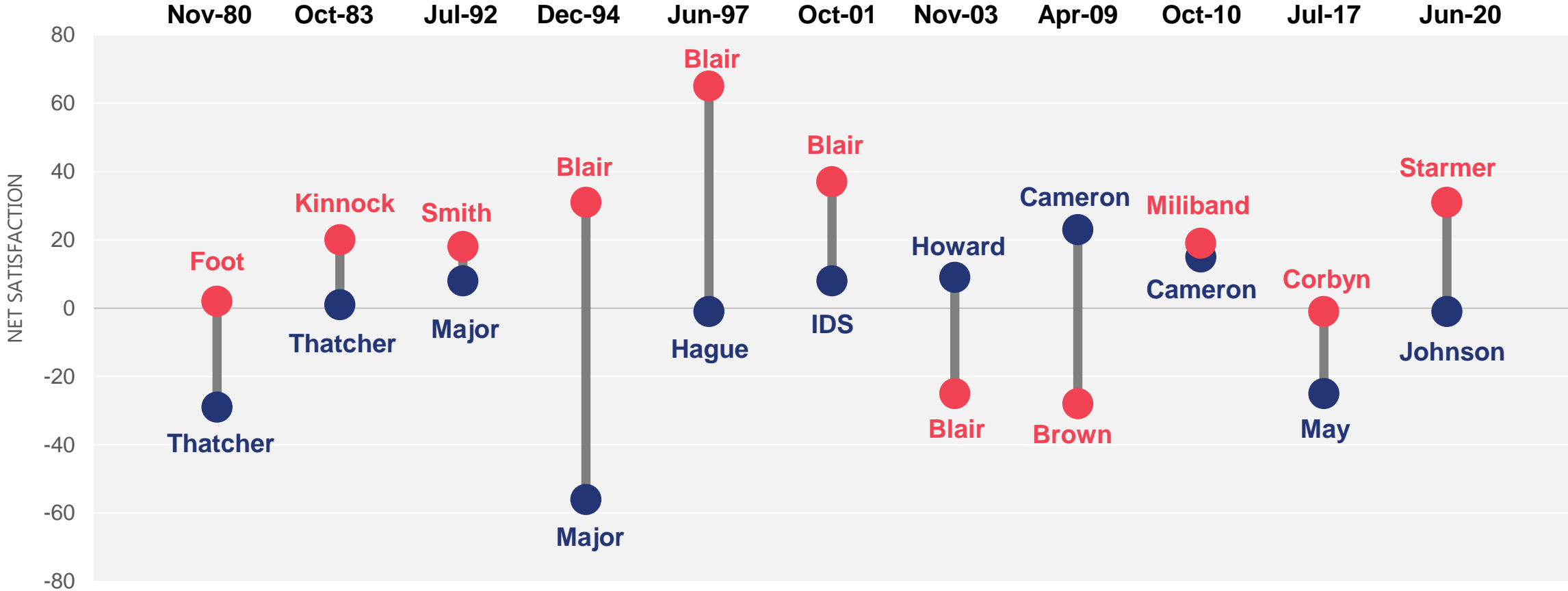
How satisfied or dissatisfied are you with the way ... is doing his job as leader of the ... Party?



Note: Data collected prior to February 2008 was collected via face-to-face methodology; data collected from February 2008 was via telephone
 Base: c. 1,000 British adults each month

Satisfaction with Leader of the Opposition: Highest net scores achieved by each leader and corresponding PM rating at time

How satisfied or dissatisfied are you with the way ... is doing his job as leader of the ... Party/PM?

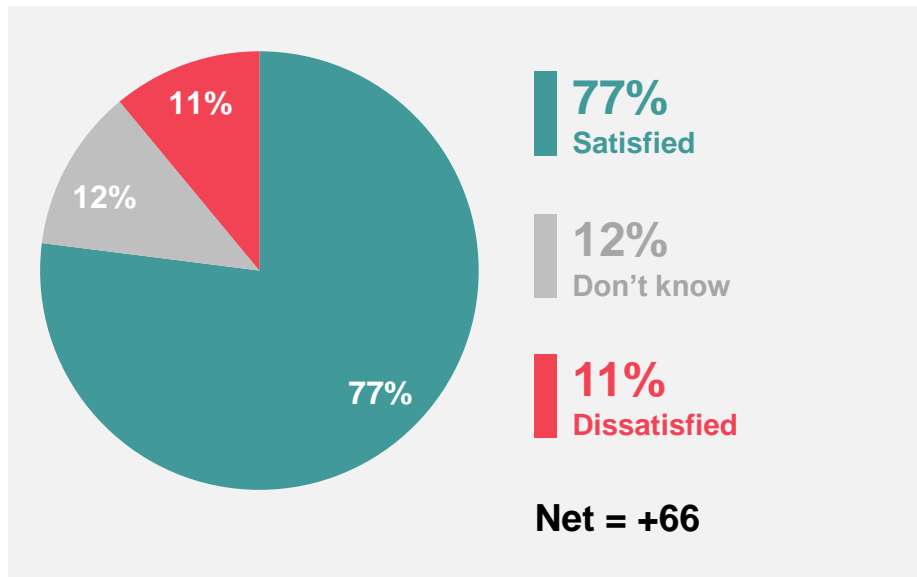


Note: Data collected prior to February 2008 was collected via face-to-face methodology; data collected from February 2008 was via telephone
Base: c. 1,000 British adults each month

Keir Starmer: Satisfaction amongst Labour supporters

Are you satisfied or dissatisfied with the way Keir Starmer is doing his job as leader of the Labour Party?

June 2020

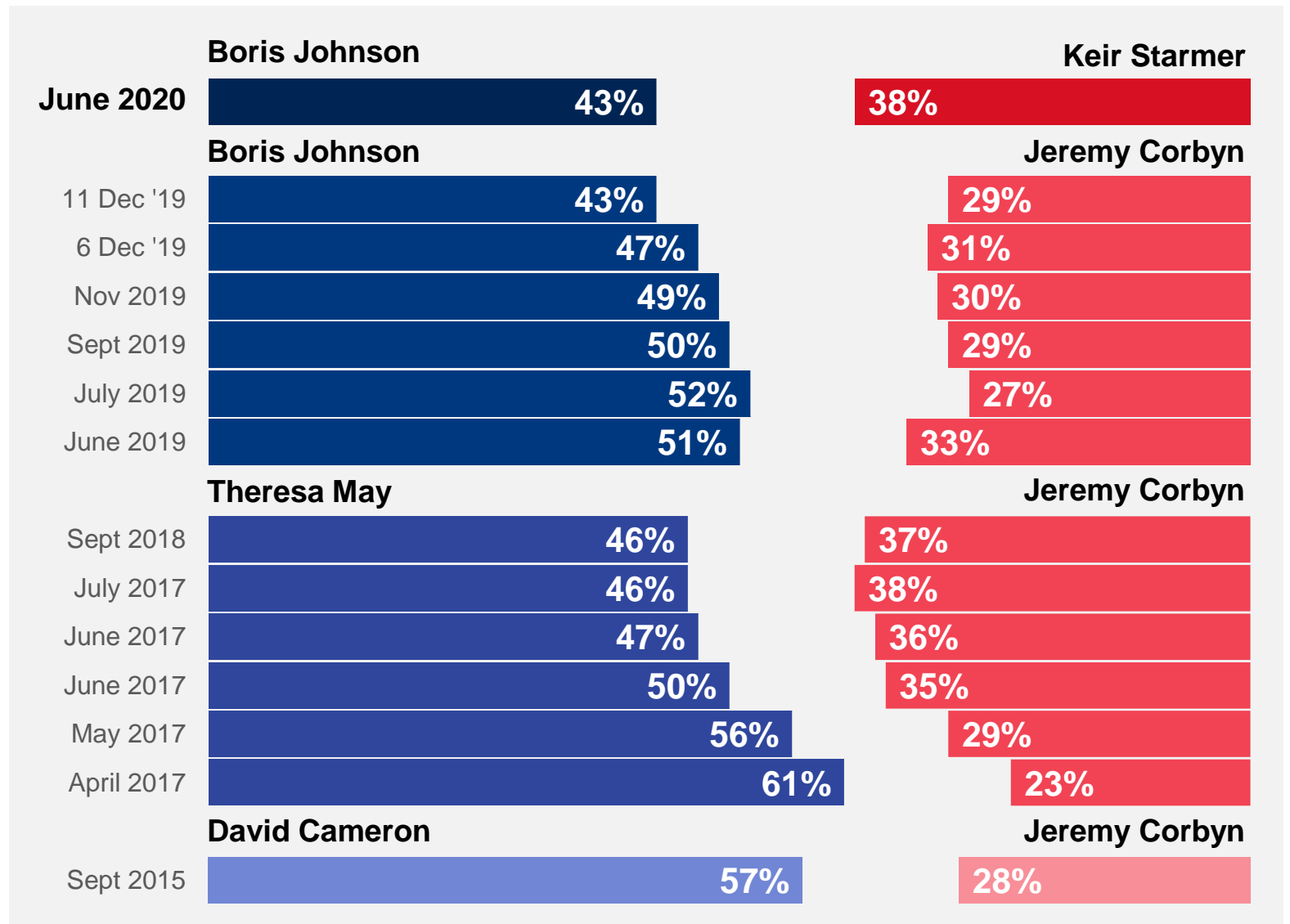


Base: 364 Labour Party supporters aged 18+, 5-10 June 2020

Source: Ipsos MORI Political Monitor

Who would make the most capable Prime Minister?

Who do you think would make the most capable Prime Minister, the Conservative's Boris Johnson, or Labour's Keir Starmer?



Base: 1,059 British adults 18+, 5 - 10 June 2020

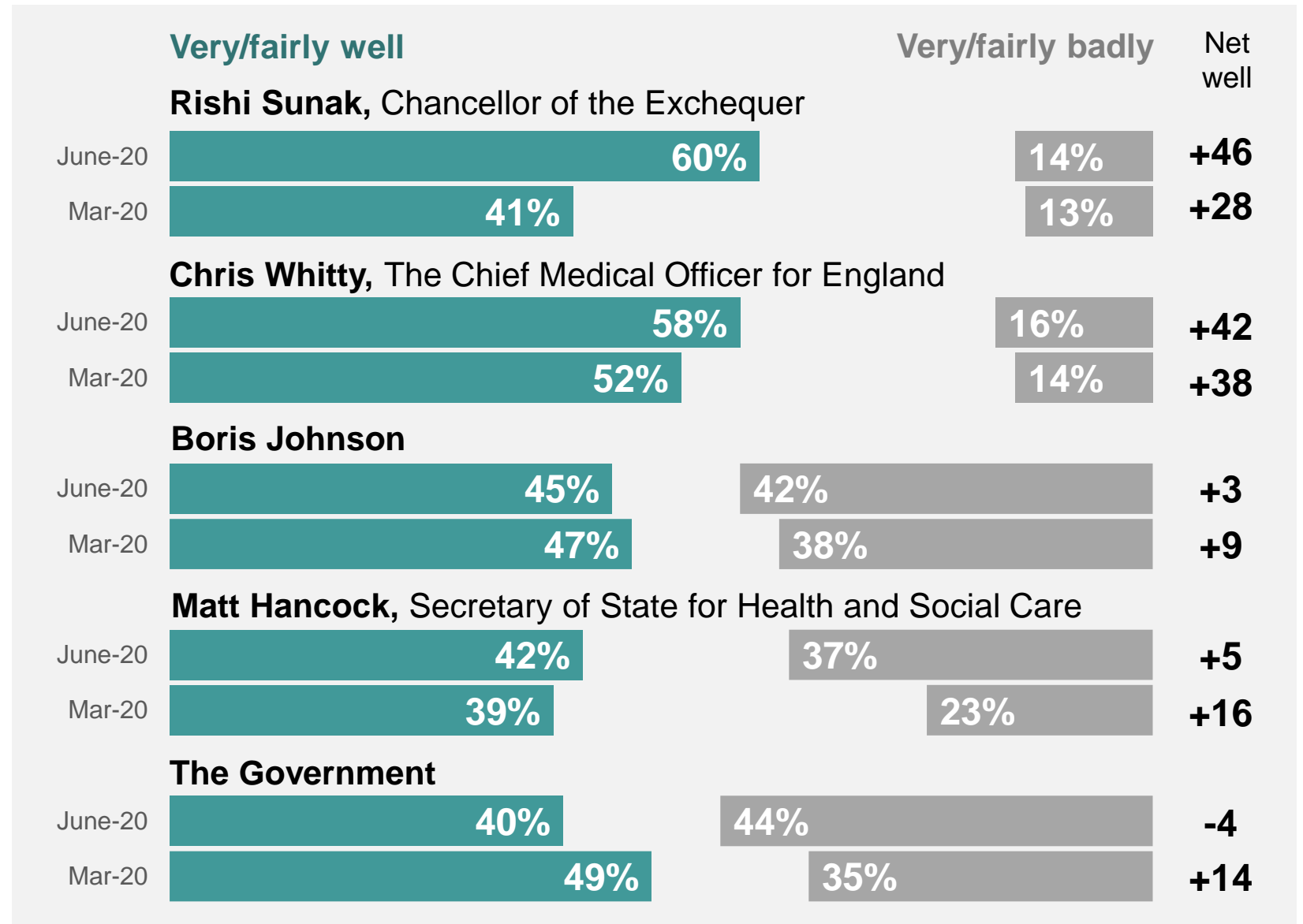
Source: Ipsos MORI Political Monitor

THE CORONAVIRUS

A microscopic view of several coronavirus particles. Each particle is spherical with a textured surface and numerous spike-like projections extending from it. The background is dark with some blurred light spots and faint structural lines, suggesting a biological or laboratory setting.

Handling of the Coronavirus outbreak

Overall, how well or badly do you think each of the following have handled the coronavirus outbreak so far? If you do not know who the person is, please say so.



Base: 1,059 British adults 18+, 5 - 10 June 2020

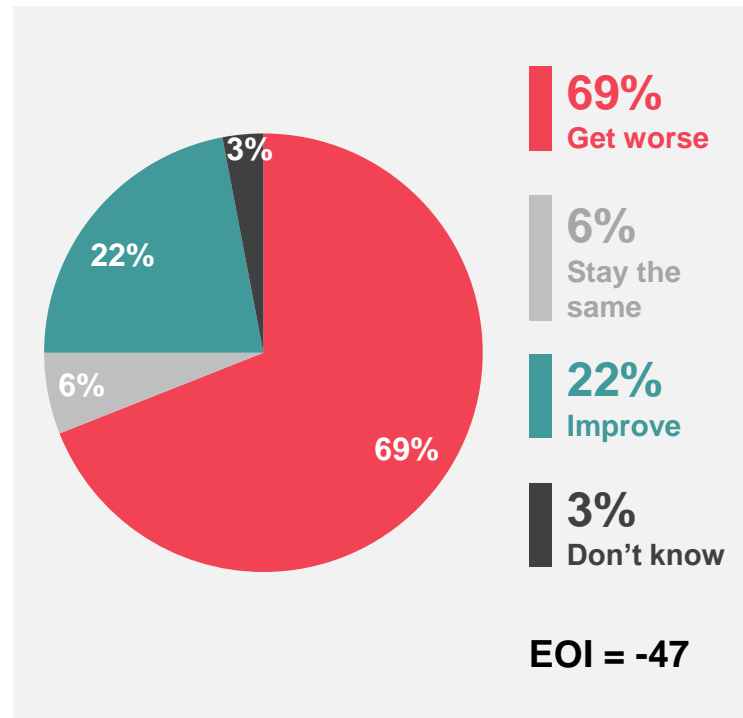
ECONOMIC OPTIMISM



Economic Optimism Index

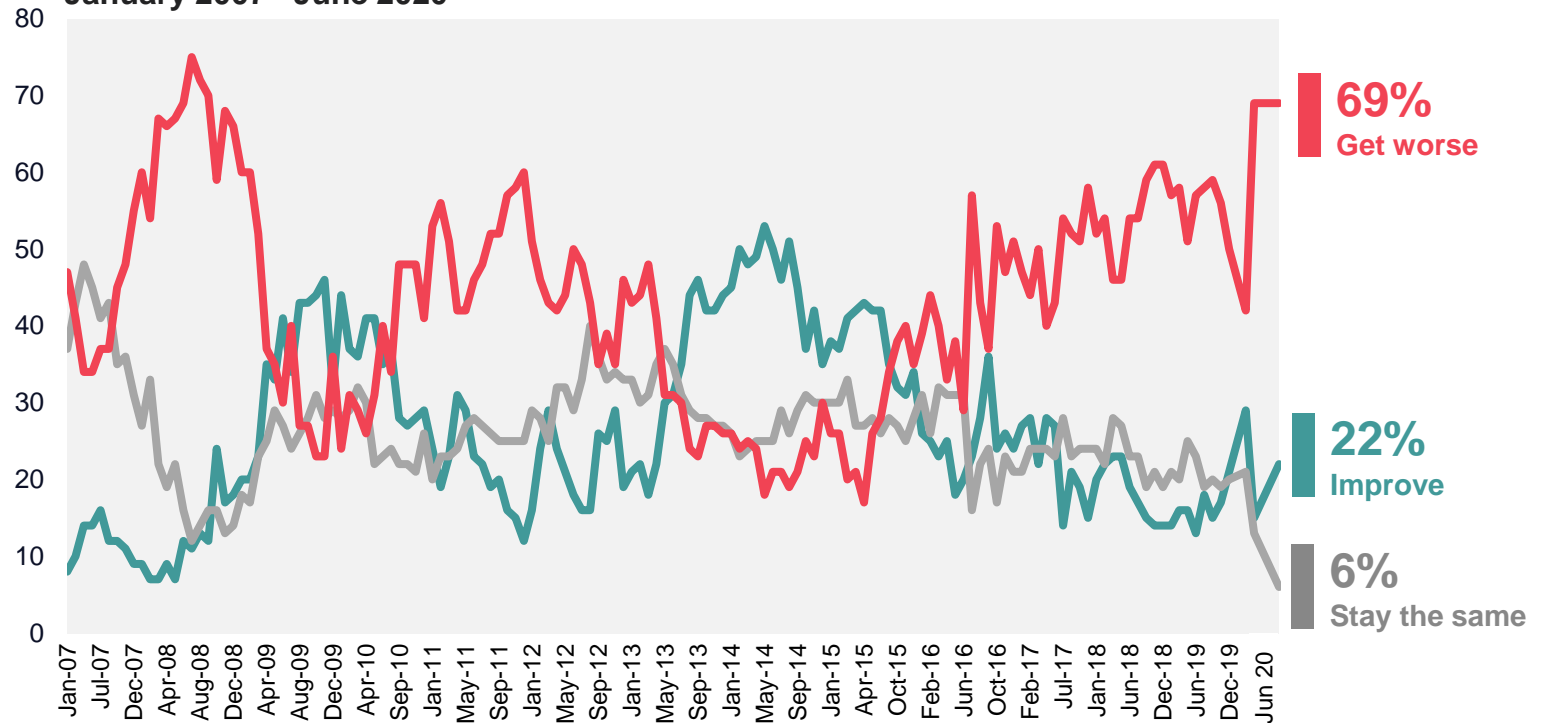
Do you think that the general economic condition of the country will improve, stay the same or get worse over the next 12 months?

June 2020



Base: 1,059 British adults 18+, 5 - 10 June 2020

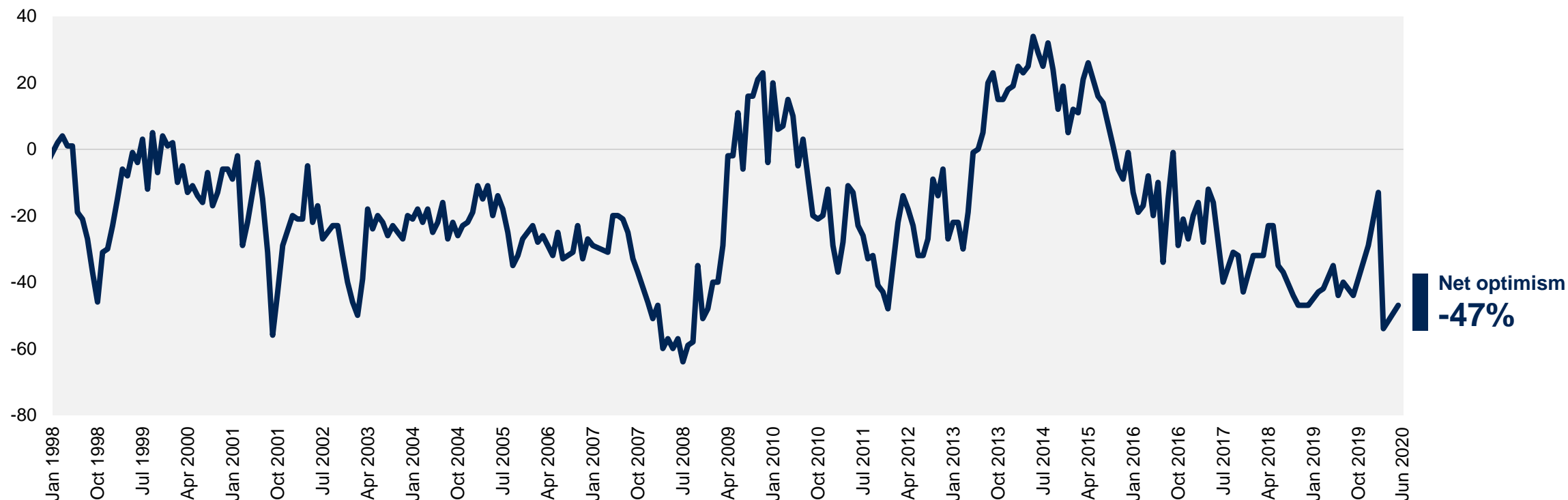
January 2007– June 2020



Source: Ipsos MORI Political Monitor

Economic Optimism Index (1998-2020)

Do you think that the general economic condition of the country will improve, stay the same or get worse over the next 12 months?



Base: c.1,000 British adults 18+ each month

Source: Ipsos MORI Political Monitor

Ipsos MORI

June 2020 Political Monitor

For more information

Gideon Skinner
Research Director
gideon.skinner@ipsos.com

Cameron Garrett
Senior Research Executive
cameron.garrett@ipsos.com

Keiran Pedley
Research Director
keiran.pedley@ipsos.com

Dylan Spielman
Research Executive
dylan.spielman@ipsos.com